



# GOWN-L1- Specification

**Example:**

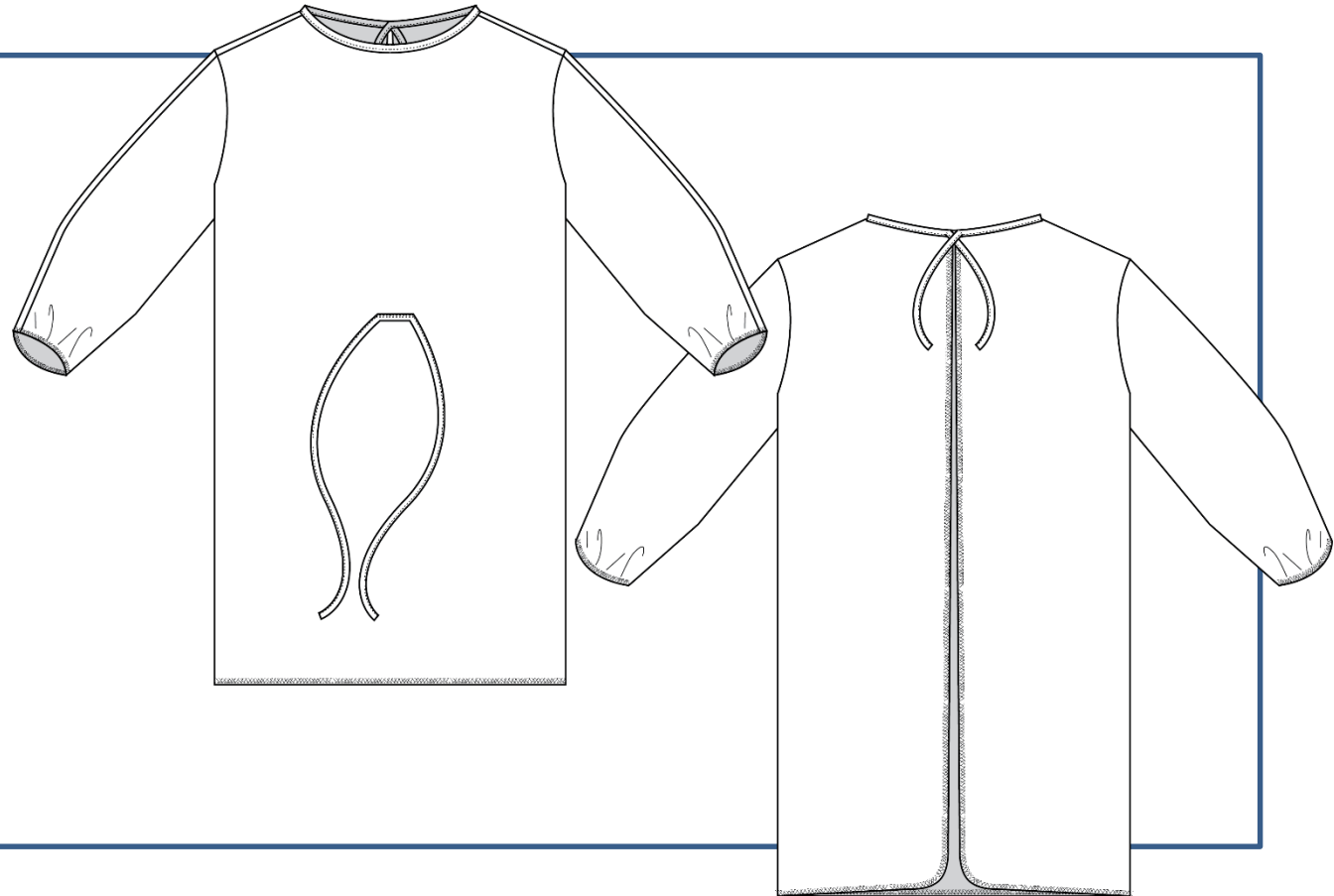
GOWN-L1-XL

**Description:**

Level 1 Gown, Kimono style with curved armholes, open back, ties at front waist and back neck, elastic on sleeve ends

**Project:**

GOWN-L1



Author	Origination Date	Last Revised By	Revision Date:
Lyana Brown	3/30/2020		

# TSS Operation Sequences

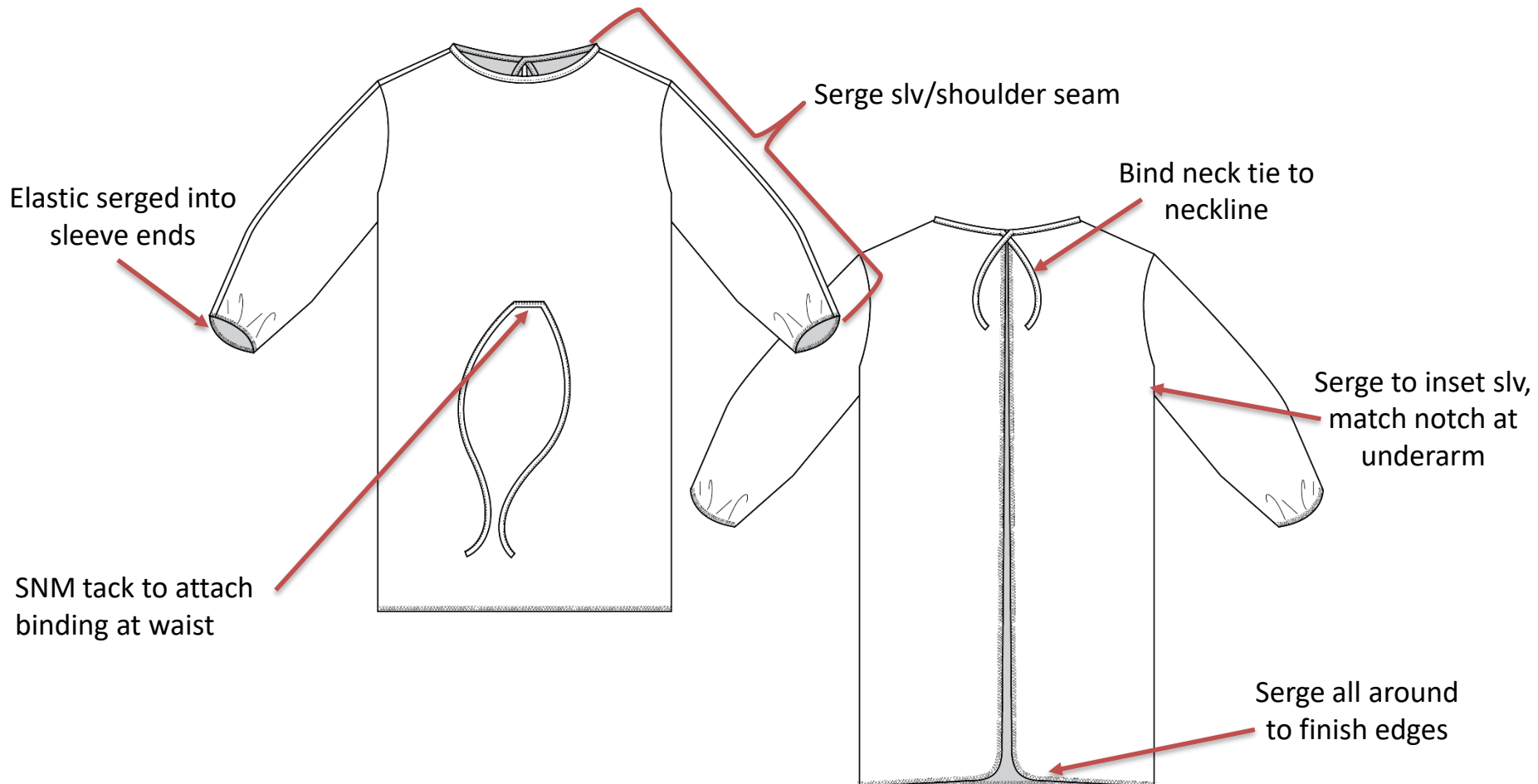
Seq #	Operation	Machine
1	Inset sleeve	Serger
2	Close top of sleeve and shoulders	Serger
3	Serge all around center back and hem	Serger
4	Bind tie and attach to neckline, bind tie for waist	SNM with folder
5	SNM tack to attach to waist	SNM
6	Attach elastic to sleeve ends	Serger with elastic
7	Inspect/Fold	Final
8		
9		
10		
11		
12		
13		

<b>Model Name:</b>	GOWN-L1-NSA	<b>Image Names:</b>			
<b>Created by:</b>	Lyana Brown	<b>Date Created:</b>	3/30/2020	<b>Notes:</b>	
<b>Revised by:</b>		<b>Date Revised:</b>		<b>Revision Notes:</b>	

## FRONT

*Sew 7-9 Stitches per inch*

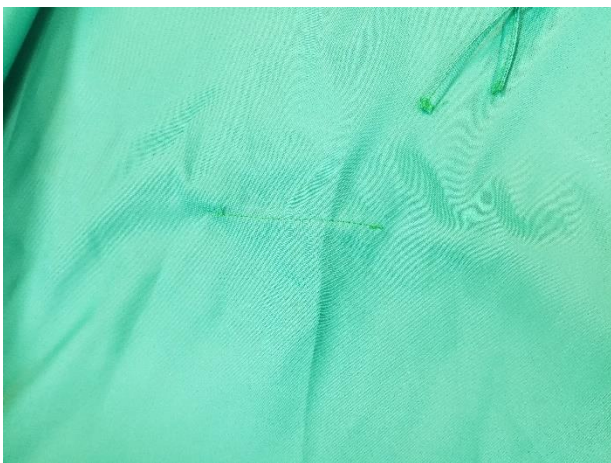
## BACK



**FRONT**



**BACK**



SNM tack to attach  
binding at waist



# Measurement Chart

Point of Measure	LG	XL	2X	3X
Center back length from HPS	47"	47"	47"	47"
Sweep	45"	53"	61"	69"
Sleeve length from HPS	23.25"	23.25"	23.25"	23.25"

All measurements have a tolerance of +/- .5"



# Revision History

Revision Date	Revised By	Slide Title	Revision Description